

## NEW ENGLAND DEVELOPMENT

# CHESTNUT HILL SQUARE

## *Chestnut Hill, Massachusetts*

### PROJECT DETAILS

**Project Type:**  
Mixed-Use/Regional Center

**GLA:**  
242,000 sf

**Address:**  
210 Boylston Street  
Chestnut Hill,  
Massachusetts 02467  
Suffolk County



CHESTNUT HILL  
SQUARE™

Chestnut Hill Square is an exciting lifestyle destination on Route 9 in Chestnut Hill, Massachusetts featuring stylish stores, restaurants, and the area's market dominant gourmet grocer, upscale fitness club, and first-class medical office space.

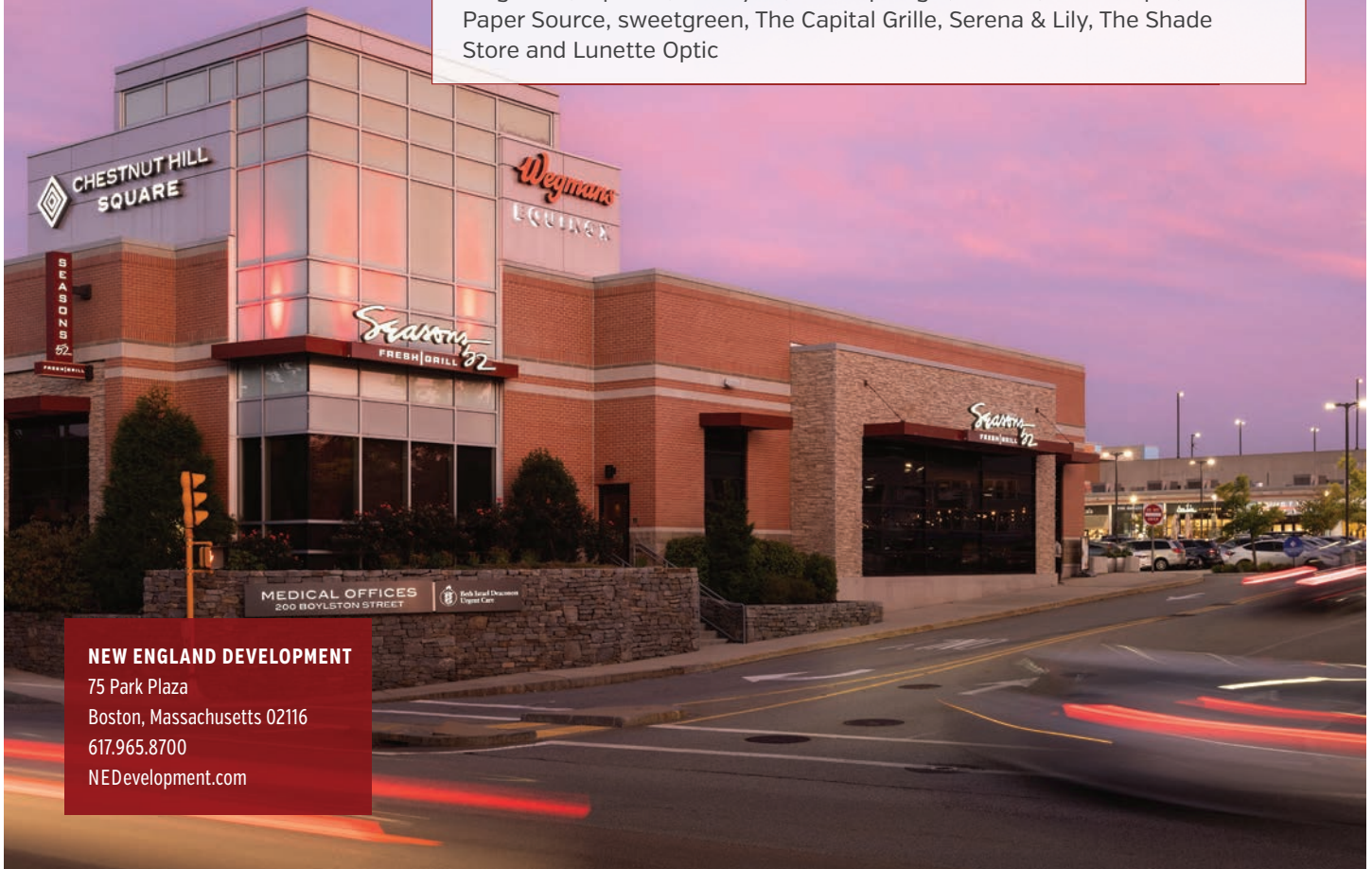
Tenants include Wegmans, Equinox, Anthropologie, Free People, Serena & Lily, Seasons 52, The Capital Grille, and many more popular specialty shops and restaurants. Beth Israel Deaconess HealthCare-Chestnut Hill and numerous other medical offices also make Chestnut Hill Square a highly frequented destination.

### LOCATION

- Surrounded by luxury residences and located in one of the country's most affluent communities, just outside of Boston.
- Ideally located on Route 9—the region's retail corridor—just six miles from downtown Boston and three miles from Interstate 95/Route 128.
- Direct access from Bloomingdale's and from Route 9 east and westbound

### KEY TENANTS

Wegmans, Equinox, SoulCycle, Anthropologie, Athleta, Free People, Paper Source, sweetgreen, The Capital Grille, Serena & Lily, The Shade Store and Lunette Optic



### NEW ENGLAND DEVELOPMENT

75 Park Plaza  
Boston, Massachusetts 02116  
617.965.8700  
NEDevelopment.com



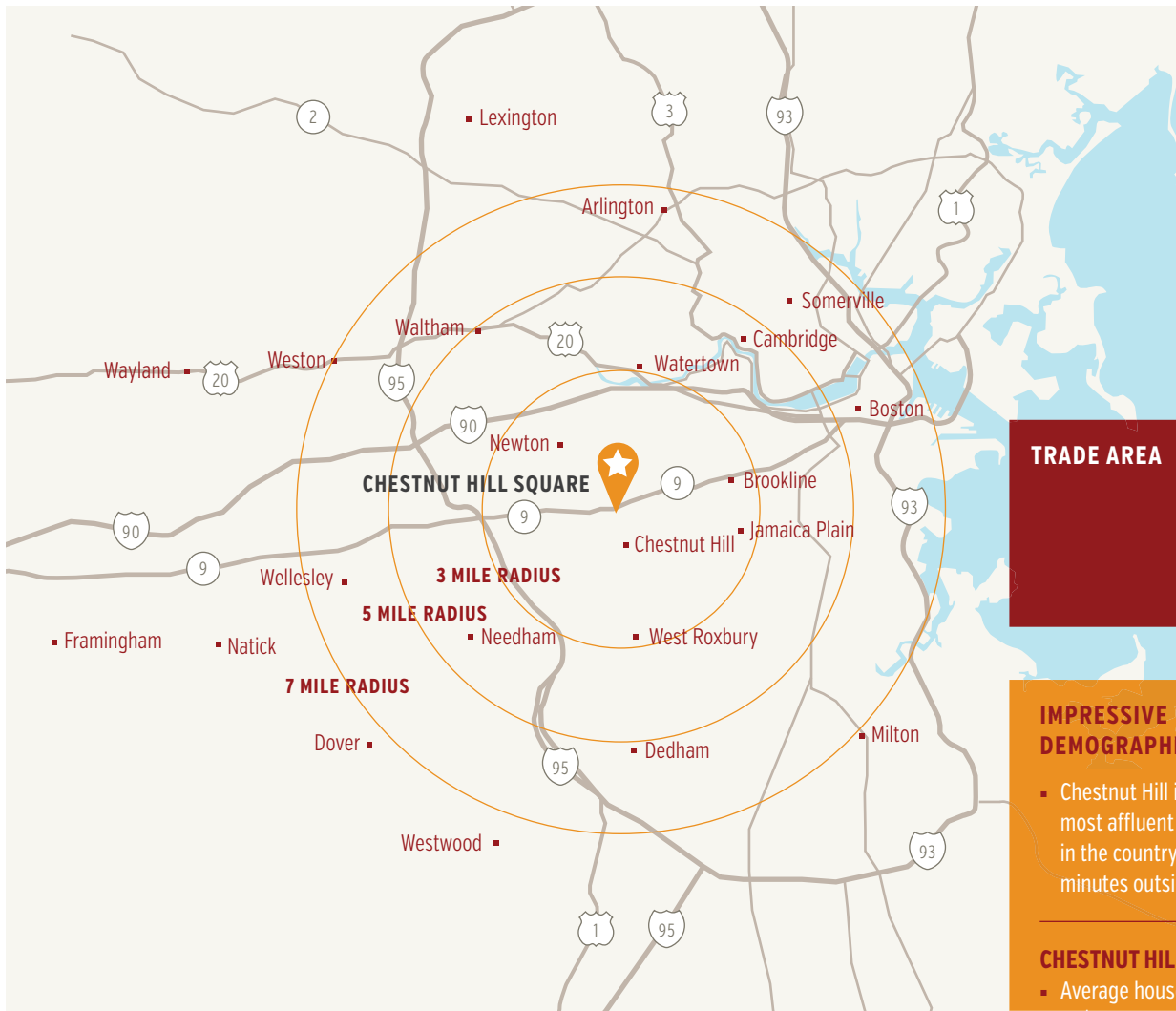


## Location

### LOCATION

- Surrounded by luxury residences and located in one of the country's most affluent communities, just outside of Boston
- Ideally located on Route 9—the region's retail corridor
- Only six miles from downtown Boston and three miles from Interstate 95/Route 128
- Direct access from Bloomingdale's and from Route 9 east and westbound





## TRADE AREA

## IMPRESSIVE DEMOGRAPHICS

- Chestnut Hill is one of the most affluent suburbs in the country and just minutes outside of Boston

## CHESTNUT HILL

- Average household income of \$250,214
- Owner-occupied median home value is \$1.19 million
- 84.3% of the population has a college degree

# Demographics

## 2022 TRADE AREA DEMOGRAPHICS

	1 mile	3 miles	5 miles	7 miles
Estimated Population	12,292	177,679	627,389	1.20 M
Estimated Households	4,134	71,385	246,156	483,877
Average Household Income	\$250,214	\$173,440	\$145,018	\$148,568
Daytime Population	11,772	144,989	525,994	1.26 M







## CHESTNUT HILL SQUARE™

Chestnut Hill Square features an exciting mix of shops and restaurants, many of which are new to Boston and New England. Look for Equinox, SoulCycle, Wegmans, Seasons 52, Anthropologie, Free People, drybar, francesca's, Serena & Lily, The Shade Store and more.



### NEW ENGLAND DEVELOPMENT

75 Park Plaza  
Boston, Massachusetts 02116  
617.965.8700  
[NEDevelopment.com](http://NEDevelopment.com)